

LED DIMMER 1004P LFP100-240V 4-150WHL 4-25W



RF28206



RF28205

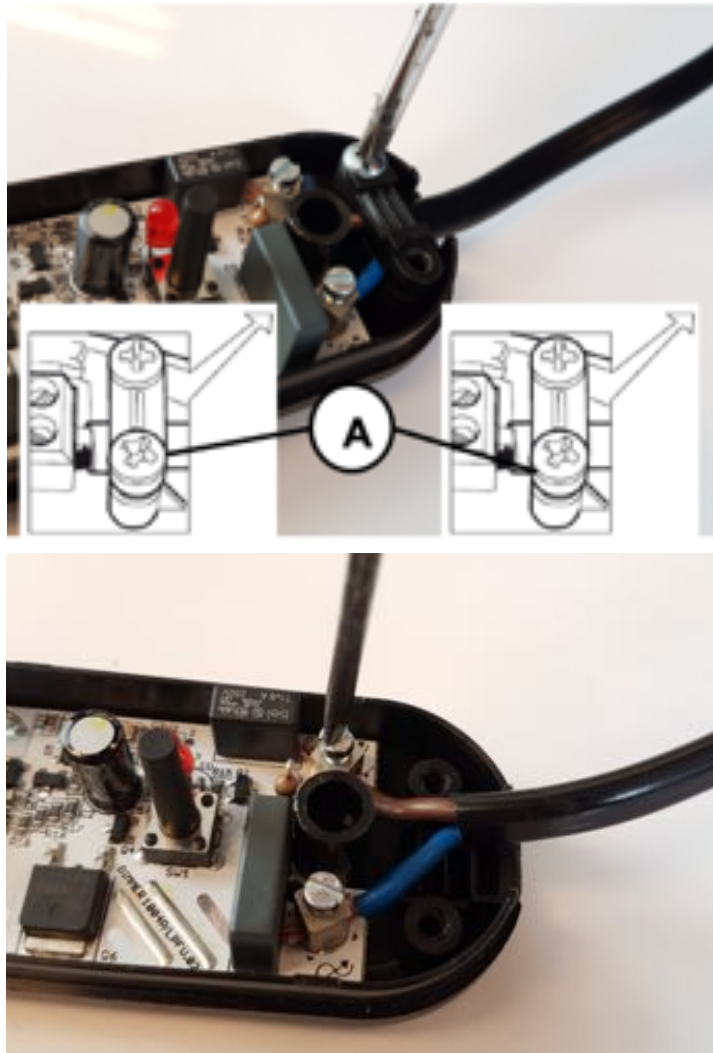
WARNING! When installing and whenever acting on the appliance, ensure that the power supply has been switched off. For the installation of the spare-part, it is necessary to consult a qualified electrician.



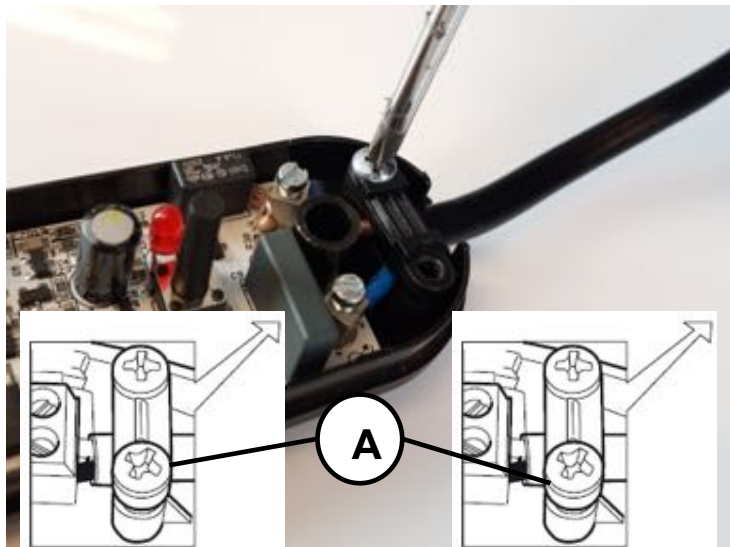
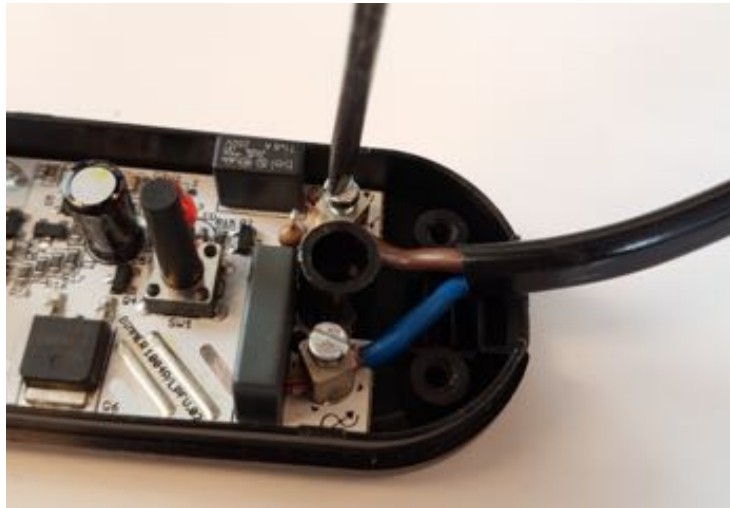
Open the dimmer box of the damaged dimmer.
For the opening, it is necessary to remove the n°2 screws using a star screw driver.

Lift-up the dimmer casing from the dimmer base;





Remove the cable clamps by unfastening the 4 screws (A) and disconnect the wires from the terminal blocks through a tiny flat headed screw driver;

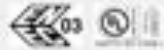
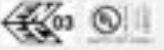



Replace the dimmer and connect the wires. When connecting the wires it is necessary to respect the polarities (L = **Brown** and N = **Blue**) to the terminal box. Lock the electrical cables by fastening the screws (A) of the cable clamps and make sure to block the isolation of the electrical cable.




Close the dimmer box.
It is necessary to place the casing on top and press down until it locks in.
it is necessary to insert the n°2 screws using a star screw driver

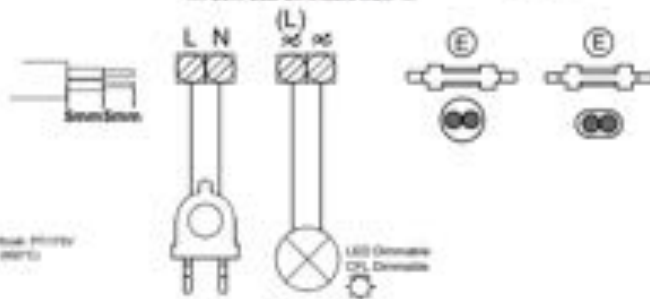
DIMMER TECHNICAL DATA SHEET

Dati tecnici	Technical Operating Data
Tensione nominale d'ingresso: 100-240 Vac	Rated input voltage: 100-240 Vac
Range di potenza: 4-25W LED Ret 4-100W @120V INC 4-150W @220-240V INC 11-25 W CFL	Power range: 4-25W LED Ret 4-100W @120V INC 4-150W @220-240V INC 11-25 W CFL
Colore: trasparente	Colour: black
Tipo di carico: CFL Incandescenza-alogene LED Retrofit	Type of load: CFL Incandescent-halogen LED Retrofit
Dimmerazione: pulsante incorporato	Dimming: built-in push button
Temperatura ambiente (Ta): 35 °C	Ambient temperature (Ta): 35 °C
Frequenza: 50-60Hz	Frequency: 50-60Hz
Tipo di cavi: piatti H03VVH2-F o tondi H03VV-F 2x0,75 mm ²	Type of cables: flat H03VVH2-F or round cable H03VV-F 2x0,75 mm ²
Fissaggio/Chiusura: a vite	Fixing/Closure: screw type
Dimensione: 96,5 x 30,5 x 28 mm	Dimension: 96,5 x 30,5 x 28 mm
Ambito applicazioni: tradizionale	Application type: traditional
Approvazioni: 	Approvals: 
Marche: 	Marking: 
Peso pezzo: 35,6 g	Item weight: 35,6 g
Pz. per confezione: 100	Pieces per unit: 100
Dimensione confezione: 23 x 29 x 18,5 cm	Size of packaging: 23 x 29 x 18,5 cm

DIMMER ELETTRONICO
ELECTRONIC LIGHT DIMMER
ELEKTRONISCHER DIMMER
VARIATEUR ELECTRONIQUE
REGULADOR DE LUZ ELECTRONICO

1004P LAMP LFP

100-240V a.c. 50/60Hz
40W-150W (@220-240V); 40W-100W (@120V) 
11W-25W CFL Dimmable Max. 4x
40W-25W LED Dimmable Max. 4x



Grado de aislamiento: 2
Grado de protección: IP 20
Índice de resistencia a corrientes superficiales: PT017W
Índice para el ciclo de funcionamiento: 1 (80% C)
Nº de ciclos: 10000
Tipo de interruptor: Electromec.
Tipo de servicio: Continuo (S1)

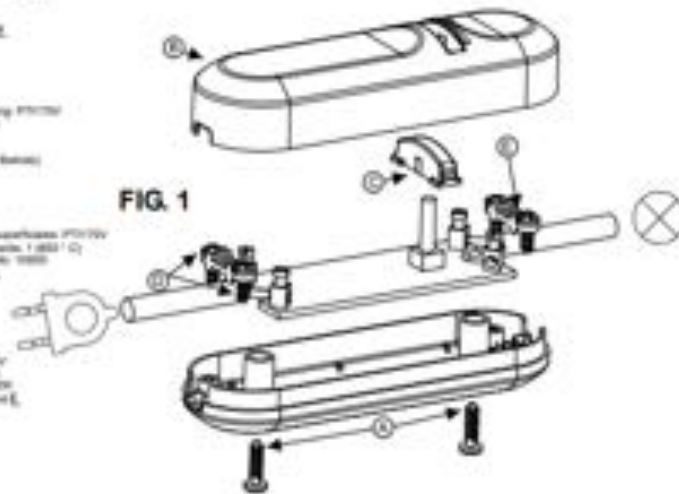
Protección Degree: 2
Protection Degree: IP 20
Resistance Index to surface current: PT017W
Index with load factor: 1 (80% C)
No. of cycles: 10000
Type of Disconnection: Electromec. E
Type of Duty: Continuous (S1)

Interrupción: 2
Schlüssel: IP20
Vorgeschichte der Kriechstromleistung: PT017W
Belastungsprüfung: 80% (1)
Anzahl Schaltzyklen: 10000
Elektronische Abschaltung: E
Serviceart: S1 (ununterbrochener Betrieb)

Grado de aislamiento: 2
Grado de protección: IP 20
Índice de resistencia a corrientes superficiales: PT017W
Índice de prueba del ciclo de funcionamiento: 1 (80% C)
Número de ciclos de funcionamiento: 10000
Tipo de interrupción: electromec. E
Tipo de servicio: Continuo (S1)

Grado de aislamiento: 2
Índice de protección: IP20
Resistencia de aislamiento: PT017W
Índice de funcionamiento: 1 (80% C)
Número de ciclos de funcionamiento: 10000
Tipo de desconexión: electromec. E
Tipo de servicio: Continuo (S1)

FIG. 1



Warranty

24 months from the date on the appliance.
The warranty becomes null and void in the case of improper use, tampering or deletion of data.