
WALL ATTACHMENT



WHITE

RF02565



BLACK

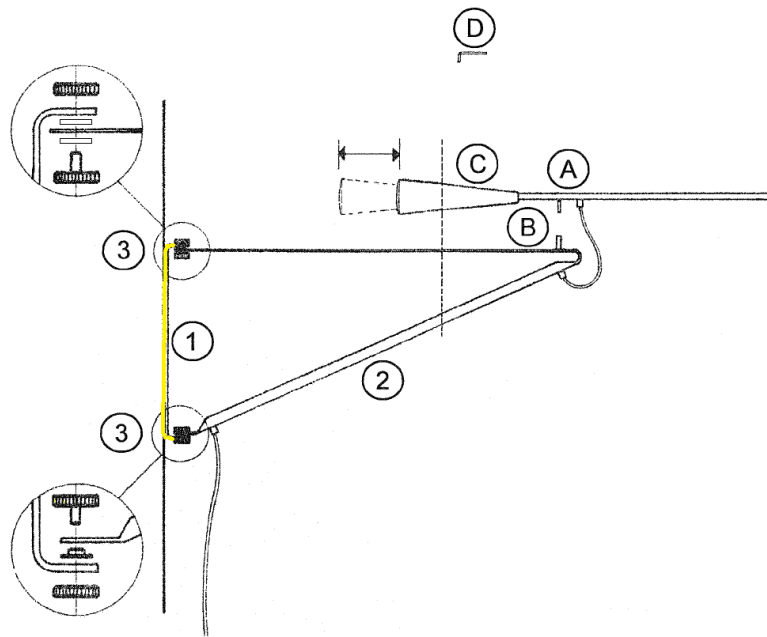
RF02566



GREY

10640

WARNING! When installing and whenever acting on the appliance, ensure that the power supply has been switched off.
For the installation, it is necessary to consult a qualified electrician.



Assemble wall attachment (1) onto the wall and lamp support (2) with grained knobs (3) positioning the nylon washers in the indicated order. Assemble the lamp stem arm to the support (2) by inserting the pin (A) into the sleeve (B). Once install the lamp-bulb you note that the arm stem is not straight, balance it through the counterweight. When balanced lock the screw (C) by utilizing the key (D).

TECHNICAL DRAWING WALL ATTACHMENT (measurements in millimeter)

