

FLOS

RF0250100

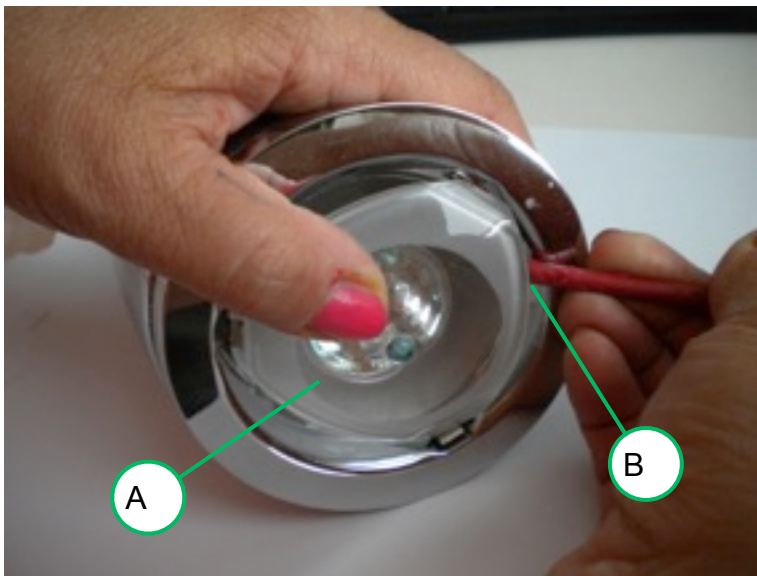
KIT OF FIXING SPRING & BRACKETS



FLOS U.S.A., Inc. 110 York Street, 5th Floor, Brooklyn, NY 11201 | Tel: 718-875-3472 | Email: e-shop@flosusa.com | <http://usa.flos.com>

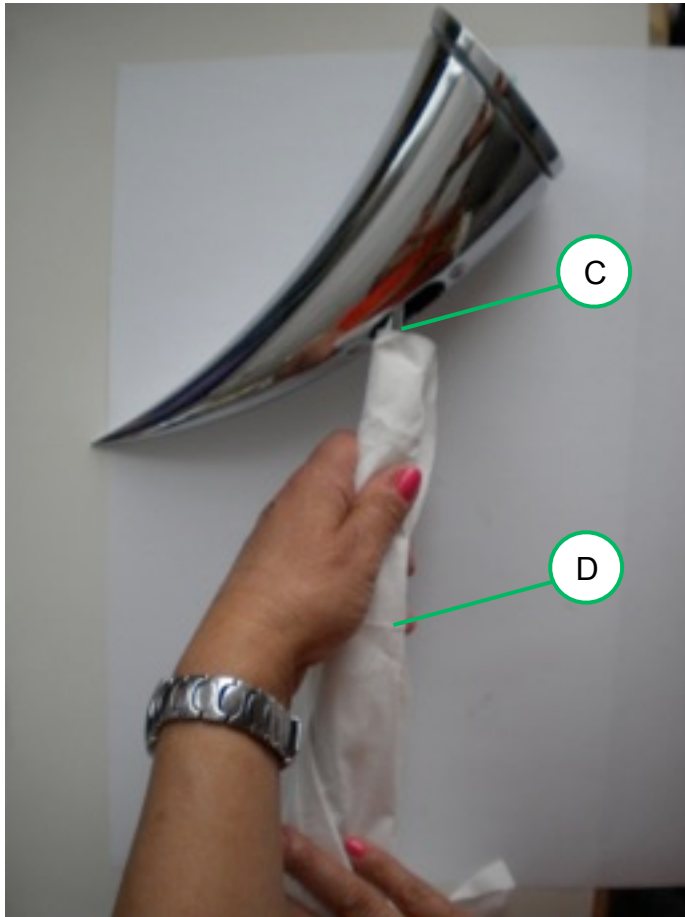
This document is exclusive property of Flos S.p.A. and its affiliated companies.

WARNING! When installing and whenever acting on the appliance, ensure that the power supply has been switched off. For the installation of the spare-part, it is necessary to consult a qualified electrician.



Remove the glass protection (A) by inserting between the reflector and glass a small flat screw-driver (B) and then remove the glass protection (A) by lifting it off.

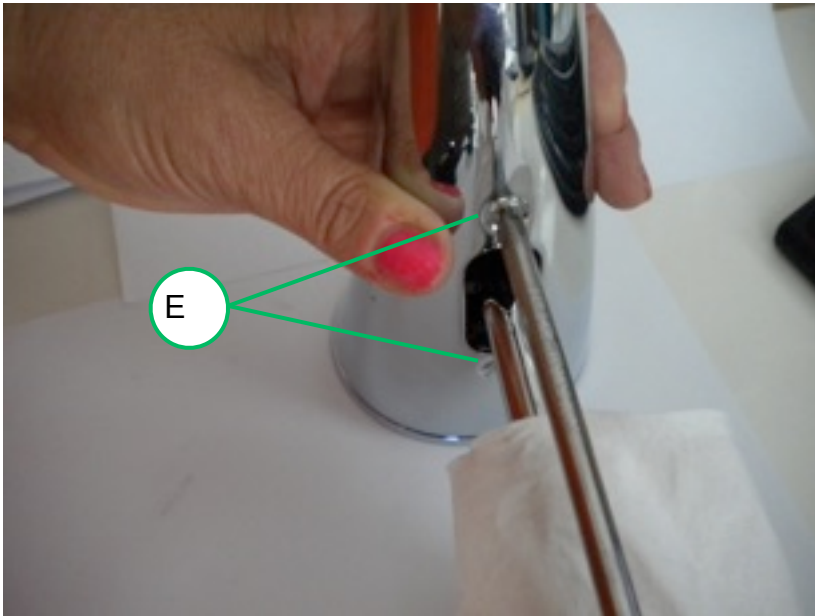
Remove the lamp bulb.



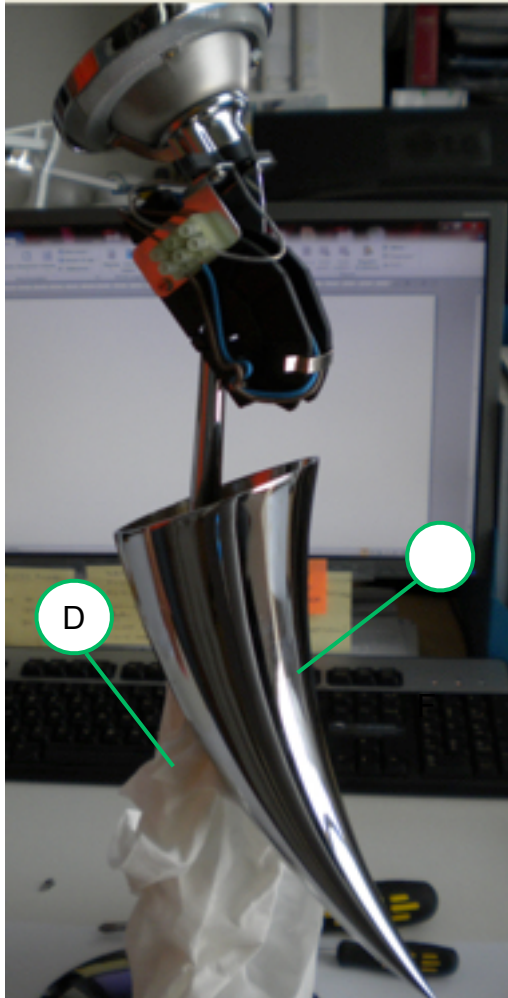
Wrap a clean soft cloth (D) around the lamp stem (C).

REMARKS!!! The cloth is utilized to avoid scratches on the lamp stem during removal of the lamp head.

FLOS

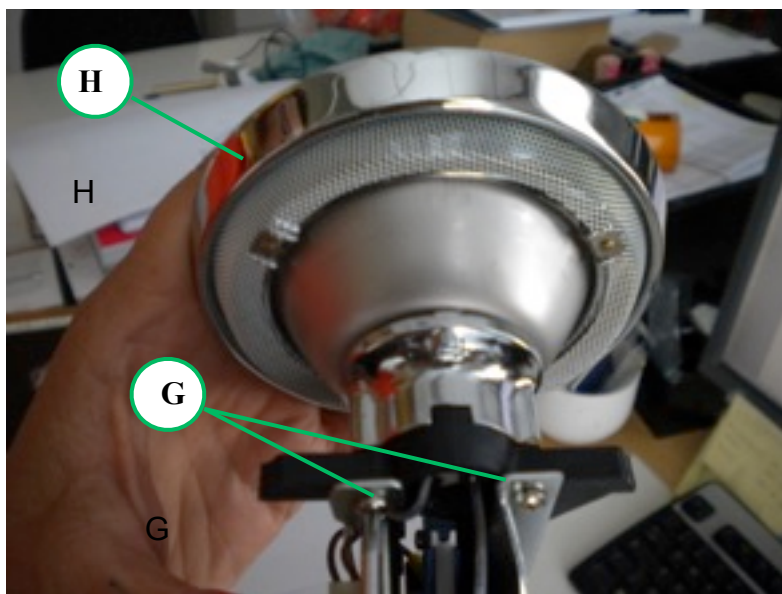


Unfasten the 2 screws (E) present under the lamp head.

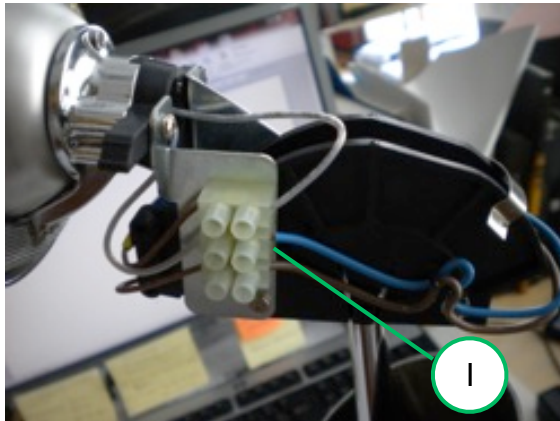


Remove the lamp head (F) from the internal electrical assembly, ensuring that it slide down, long the soft cloth (D).

FLOS



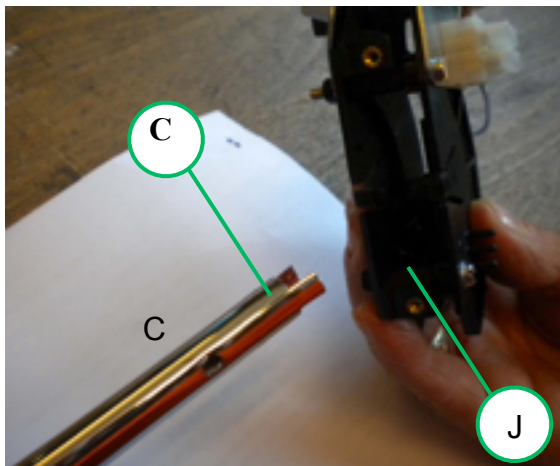
Unfasten the 2 screws (G) and remove the reflector (H).

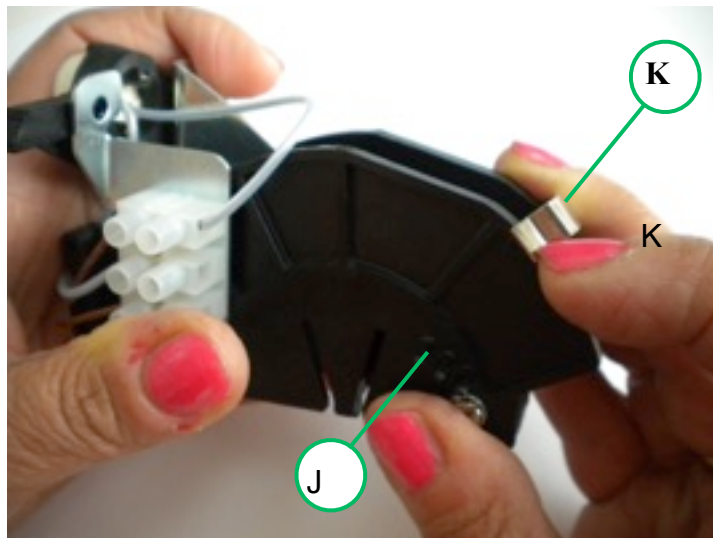


Disconnect the electrical wires (Brown & Blue) from the terminal (I).

REMARKS!!! Disconnect the wires only on the main side.

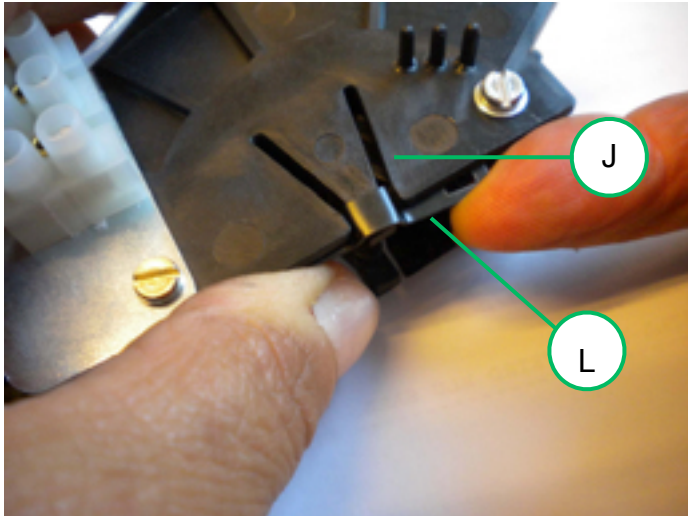
Remove the electrical assembly (J) from the lamp stem (C).



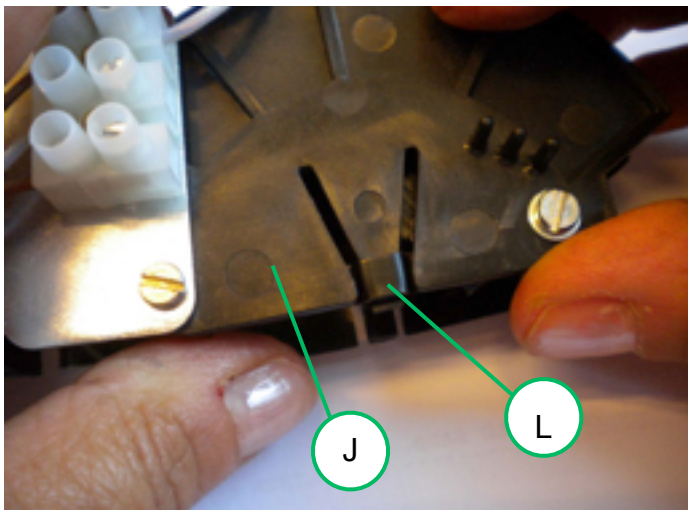


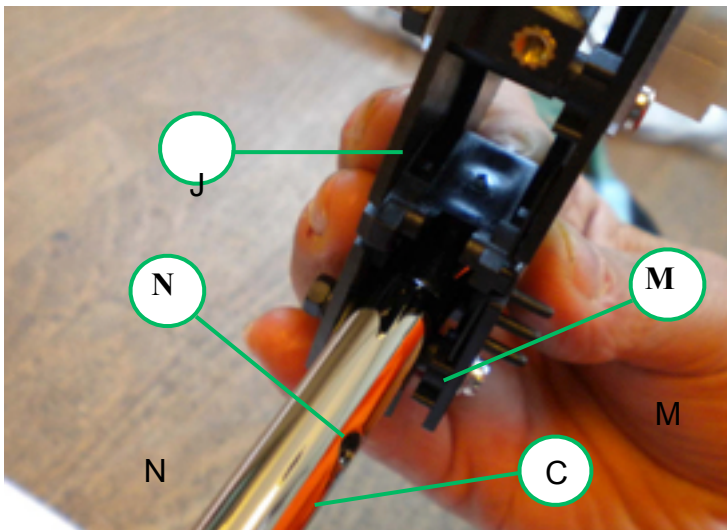
Assemble now the new spare-part:

Clip the spring (K) on the electrical assembly (J) as shown in the picture on the left hand side.

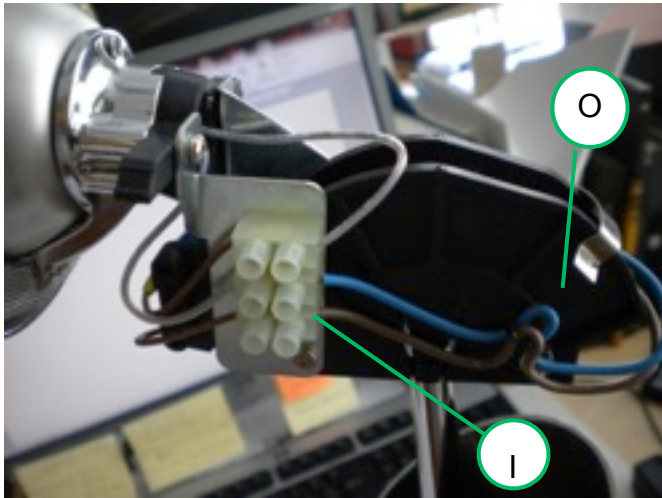


Insert the 2 brackets (L) on the 2 sides of the electrical assembly (J) as shown in the picture on the left hand side.





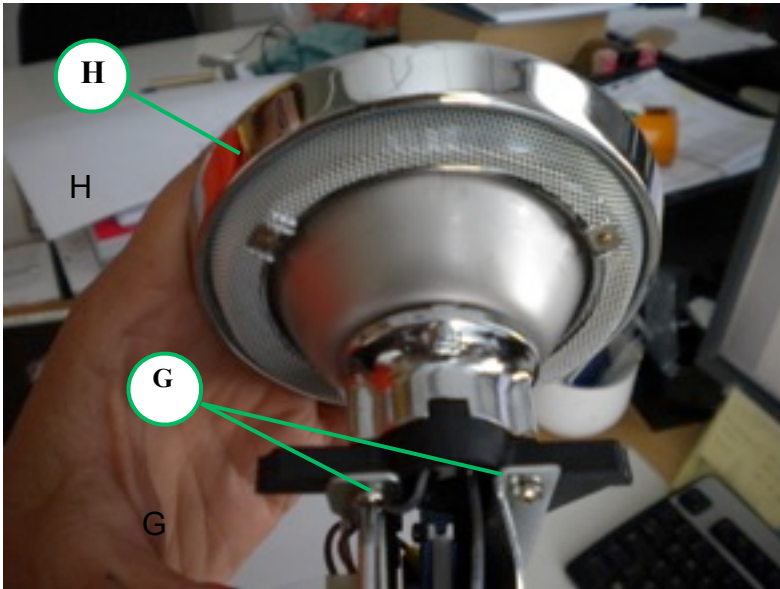
Install the electrical assembly (J) on the lamp stem (C). To insert the electrical assembly (J) on the stem (C), it is necessary to hook the pin (M) in the hole (N) present on the lamp stem (C).



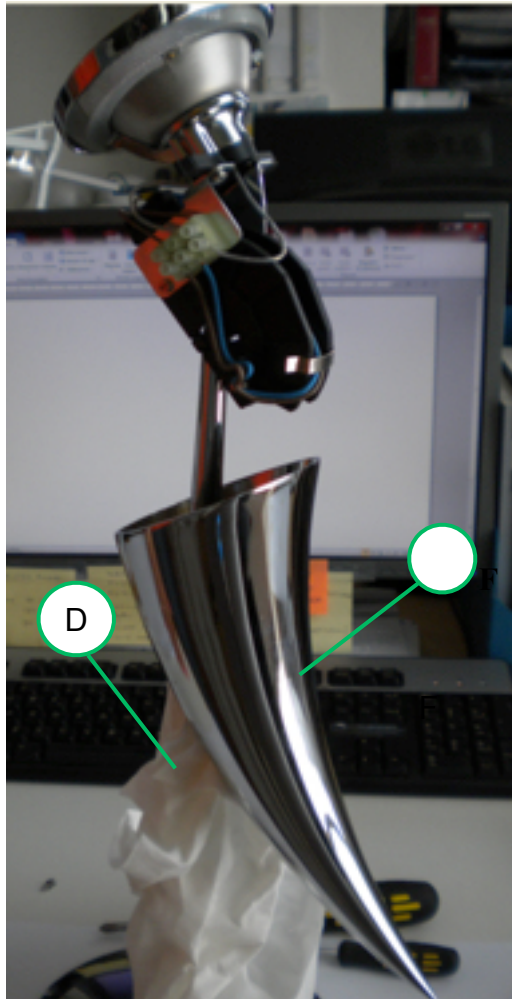
Connect the electrical wires (Brown & Blue) on the terminal (I).

Verify that the electrical wires are locked on the hook (O) on the electrical assembly as per picture on the left hand side.

FLOS

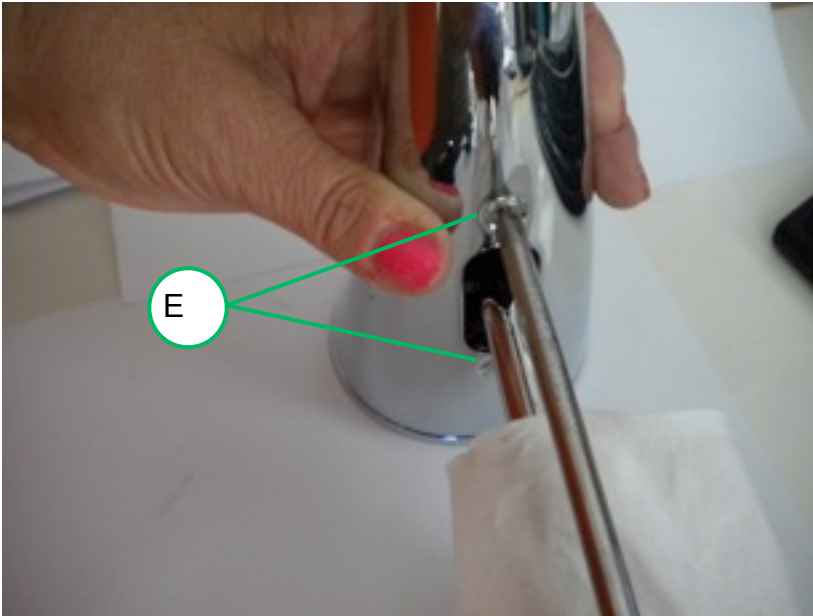


Position the reflector (H) and fasten the 2 screws (G).

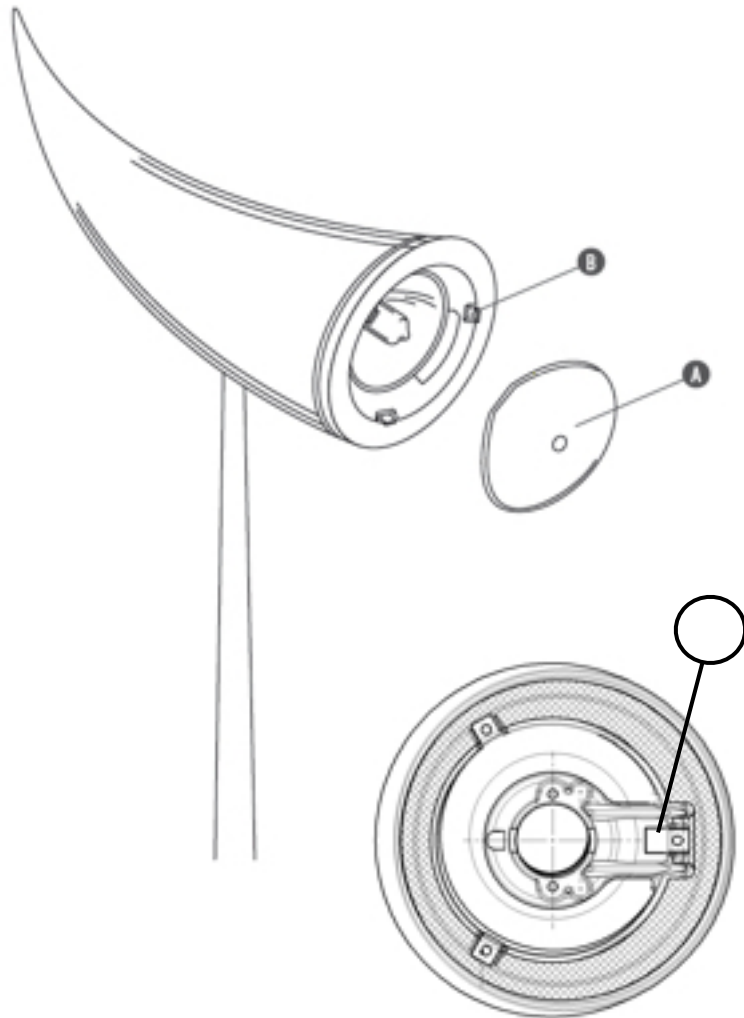


Position back the lamp head (F) on the internal electrical assembly and then remove the cloth (D).

FLOS



Fasten the 2 screws (E) present under the lamp head.



Insert the lamp bulb and then insert the glass protection (A) inside the springs (B).

N:B If the protection glass moves, it is necessary to remove the protection glass, lift-up delicately the 3 springs (C) on the reflector and then try re-install the protection glass.

FLOS

FLOS U.S.A., Inc. 110 York Street, 5th Floor, Brooklyn, NY 11201 | Tel: 718-875-3472 | Email: e-shop@flosusa.com | <http://usa.flos.com>

This document is exclusive property of Flos S.p.A. and its affiliated companies.