

---

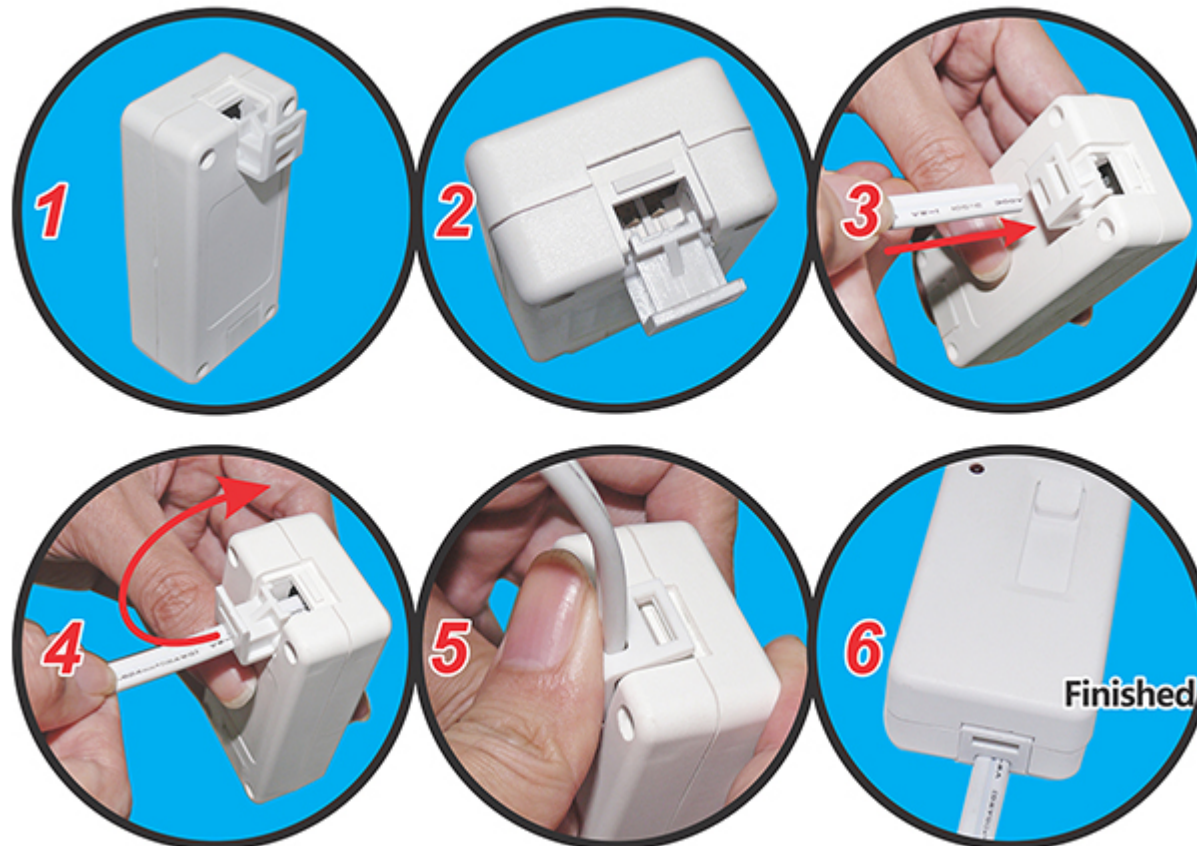
**28014US**

BLACK DIMMER SUN-LITE J-45A 300W 120V

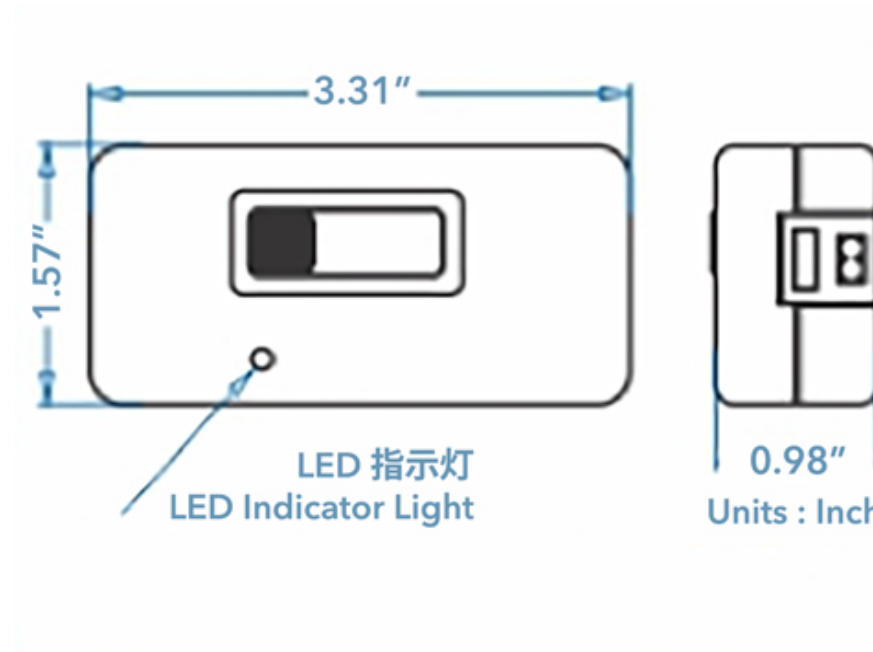


## INSTALLATION SHEET

The “on-cord” dimmer that’s easy to connect to table lamps. Determine a position on the lamp cord for the placement of the dimmer. Unplug the lamp, and using a standard wire cutter, simply cut the cord, plug the ends into each side of the dimmer.



## DIMENSIONS & TECHNICAL INFO



Full-Dimmer switch for inc. dimmable Led & CFL.  
Cat. NO.: J-45A  
Input: 120 Vac, 60 Hz  
Inc.: 300W/ Led:100W/CFL:100W  
Indoor use only for SPT-2 18 AWG only pat. pending