

PEDAL SWITCH



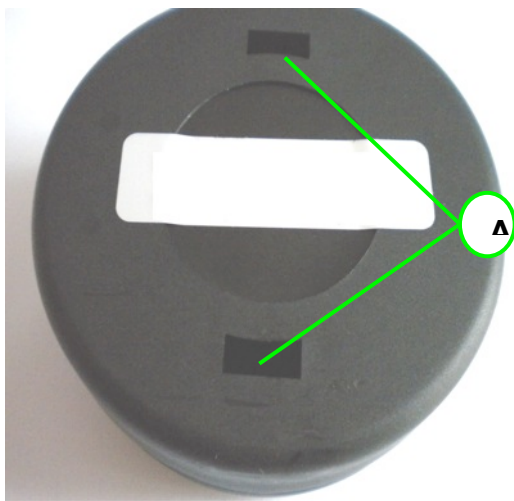
23461



22350

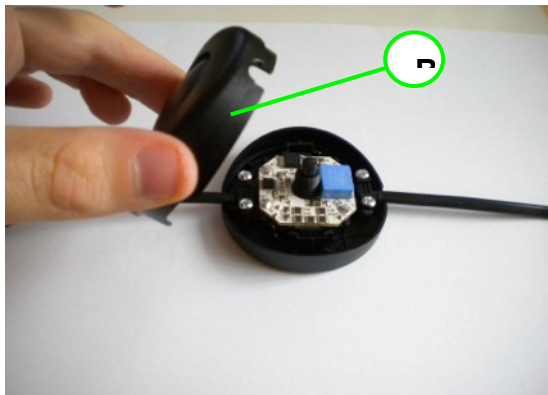
WARNING! When installing and whenever acting on the appliance, ensure that the power supply has been switched off.

For the installation of the spare-part, it is necessary to consult a qualified electrician.

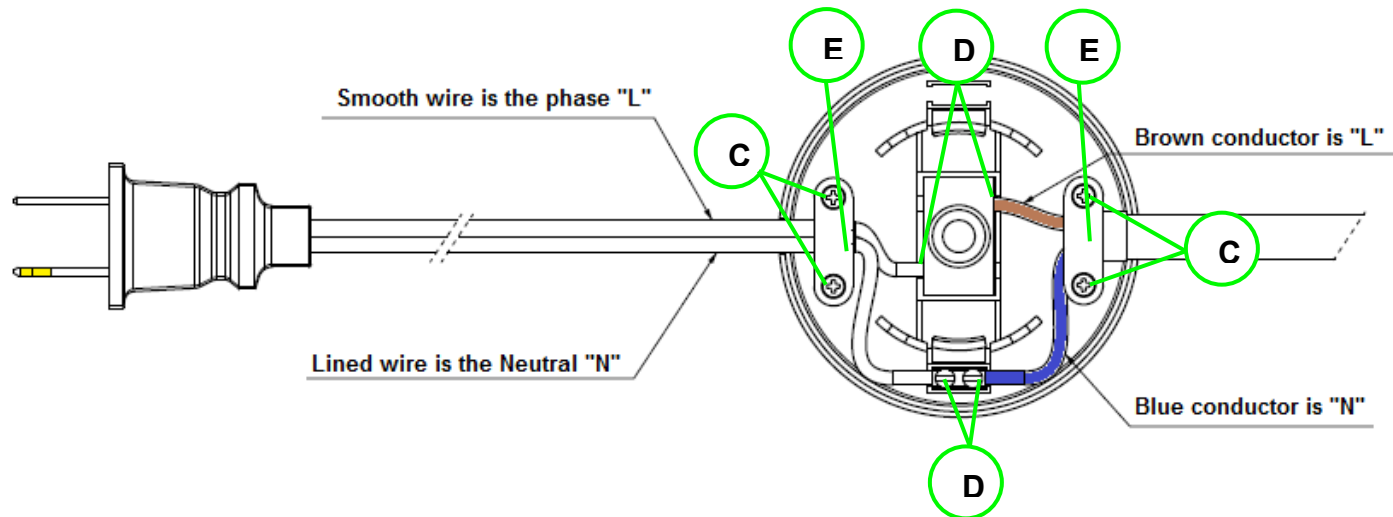


Turn the pedal switch and open the casing, by unhooking the supports (A) with a flat screw driver.

Remove the casing (B).



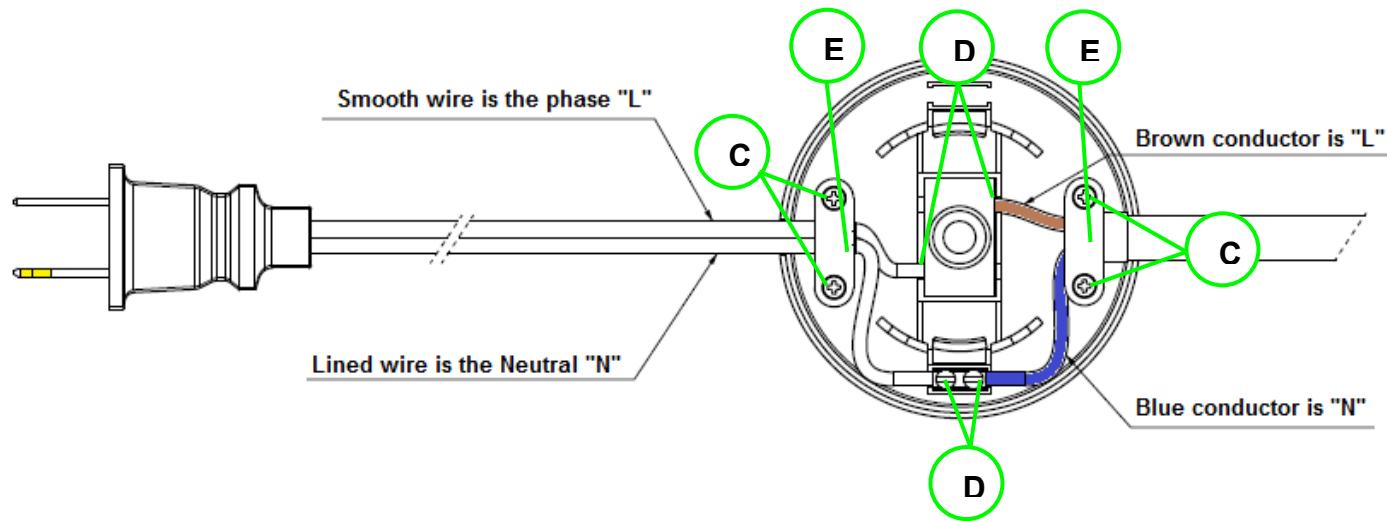
Unfasten all the screws (C) of the cable clamps (E) and disconnect the wires (D).



Assemble now the new spare-part:

FLOS U.S.A., Inc. 110 York Street, 5th Floor, Brooklyn, NY 11201 | Tel: 718-875-3472 | Email: e-shop@flosusa.com | <http://usa.flos.com>

Connect all the wires (D) to the new switch by respecting the polarities (please refer to the electrical connection below) and lock the cable by collocating the cable clamps (E) and fasten there apposite screws (C).





Close the dimmer box. It is necessary to place the casing on top and press it down, until it locks in.