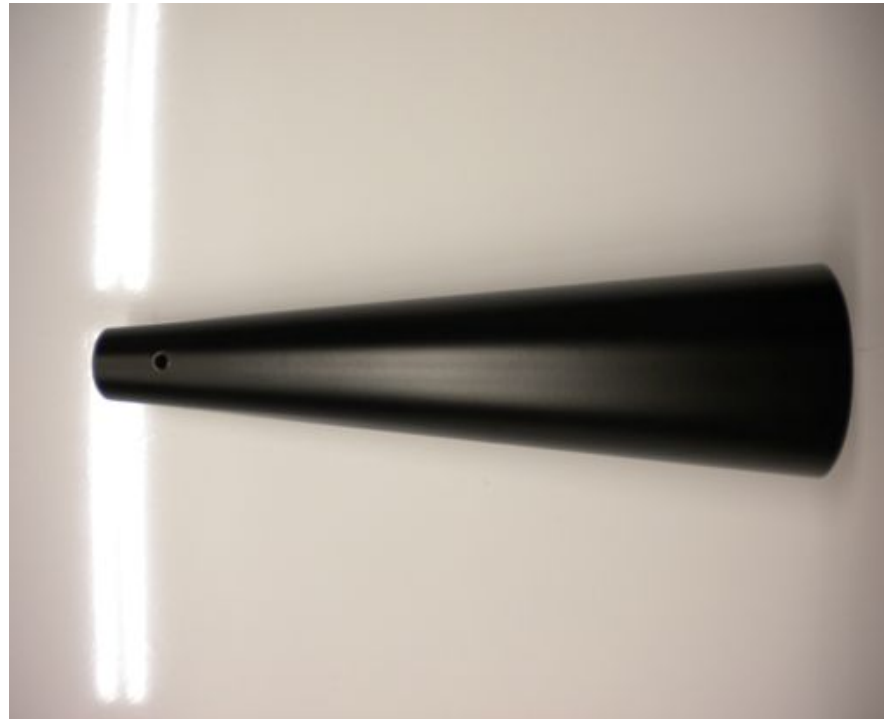


---

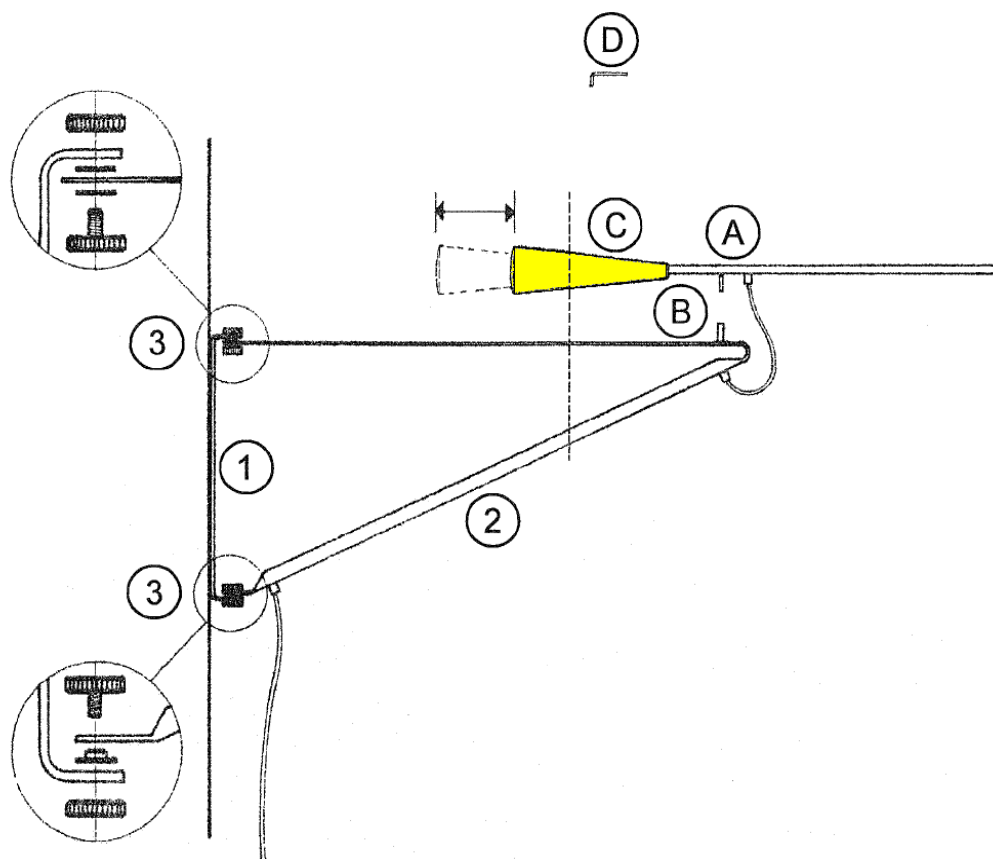
## COUNTERWEIGHT



	<b>WHITE</b>	<b>01855</b>
	<b>BLACK</b>	<b>01856</b>
	<b>GREY</b>	<b>10638</b>

**WARNING!** When installing and whenever acting on the appliance, ensure that the power supply has been switched off.

For the installation of the spare-part, it is necessary to consult a qualified electrician.



Assemble the wall bracket (1) to the wall and lamp support (2) with grained knobs (3) positioning the nylon washers in the indicated order.

Assemble the lamp stem arm to the support (2) by inserting the pin (A) into the sleeve (B).

Once install the lamp-bulb you note that the arm stem is not straight, balance it through the counterweight. When balanced lock the screw (C) by utilizing an Allen key (D).